



Certificate of Analysis

QA SAMPLE - INFORMATIONAL ONLY

1 of 3

ICAL ID: 20240411-048
Sample: CA240411-033-060
OXIS6K041024
Strain: OXIS6K041024
Category: Ingestible
Type: Tincture

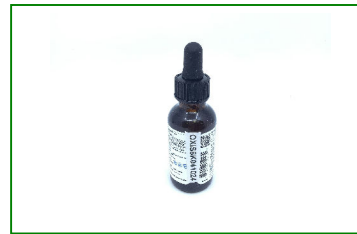
Batch#:
Batch Size Collected:
Total Batch Size:
Collected: 04/15/2024; Received: 04/15/2024
Completed: 04/15/2024

| | | | | |
|-----------------------------|-----------------------------|--------------------------------|---|-----------------------------|
| Moisture NT | Δ 9-THC ND | CBD 6,941.79 mg/unit | Total Cannabinoids 6,973.53 mg/unit | Total Terpenes NT |
| Water Activity NT | | | | |

Summary SOP Used Date Tested

Batch POT-PREP-004 High 04/15/2024 Complete Complete

Cannabinoids



Scan to see results

Cannabinoid Profile

1 Unit = bottle, 31.8 g. 1 mL = 0.96 g.

| Analyte | LOQ (mg/g) | LOD (mg/g) | % | mg/g | mg/mL | mg/unit | Analyte | LOQ (mg/g) | LOD (mg/g) | % | mg/g | mg/mL | mg/unit |
|----------------|------------|------------|---------------|---------------|---------------|----------------|------------------|------------|------------|--------------|---------------|---------------|----------------|
| THCa | 0.1841 | 0.0614 | ND | ND | ND | ND | CBGa | 0.2669 | 0.0890 | ND | ND | ND | ND |
| Δ 9-THC | 0.0794 | 0.0265 | ND | ND | ND | ND | CBG | 0.0915 | 0.0305 | ND | ND | ND | ND |
| Δ 8-THC | 0.0824 | 0.0275 | ND | ND | ND | ND | CBN | 0.1112 | 0.0371 | ND | ND | ND | ND |
| THCV | 0.0714 | 0.0238 | ND | ND | ND | ND | Total THC | | | ND | ND | ND | ND |
| CBDa | 0.0880 | 0.0293 | ND | ND | ND | ND | Total CBD | | | 21.83 | 218.30 | 209.56 | 6941.79 |
| CBD | 0.0755 | 0.0252 | 21.830 | 218.30 | 209.56 | 6941.79 | Total | | | 21.93 | 219.29 | 210.52 | 6973.53 |
| CBDV | 0.0741 | 0.0247 | 0.100 | 1.00 | 0.96 | 31.74 | | | | | | | |
| CBC | 0.2221 | 0.0740 | ND | ND | ND | ND | | | | | | | |

Total THC=THCa * 0.877 + d9-THC + d8-THC + d8-THC; Total CBD = CBDa * 0.877 + CBD. LOD= Limit of Detection, LOQ= Limit of Quantitation, ND= Not Detected, NR= Not Reported. Potency is reported on a dry weight basis. Instrumentation and analysis SOPs used: Cannabinoids:UHPLC-DAD(POT-INST-005);Moisture:Moisture Analyzer(MOISTURE-001);Water Activity:Water Activity Meter(WA-INST-002), Foreign Material:Microscope(FOREIGN-001). Density measured at 19-24 °C, Water Activity measured at 0-90% RH. All QA submitted by the client, All CA State Compliance sampled using SAMPL-SOP-001.

Terpene Profile

| Analyte | LOQ (mg/g) | LOD (mg/g) | % | mg/g | Analyte | LOQ (mg/g) | LOD (mg/g) | % | mg/g |
|---------|------------|------------|---|------|---------|------------|------------|---|------|
|---------|------------|------------|---|------|---------|------------|------------|---|------|

NR= Not Reported (no analysis was performed), ND= Not Detected (the concentration is less than the Limit of Detection (LOD)). Analytical instrumentation used: HS-GC-MS; samples analyzed according to SOP TERP-INST-003.



Infinite Chemical Analysis Labs
8312 Miramar Mall
San Diego, CA
(858) 623-2740
www.infiniteCAL.com
Lic# C8-0000047-LIC

Josh M Swider

Josh Swider
Lab Director, Managing Partner
04/15/2024

Confident LIMS
All Rights Reserved
coa.support@confidentlims.com
(866) 506-5866
www.confidentlims.com



This product has been tested by Infinite Chemical Analysis, LLC using valid testing methodologies and a quality system as required by state law. All LQC samples were performed and met the prescribed acceptance criteria in 16 CCR section 15730, pursuant to 16 CCR section 15726(e)(13). Values reported relate only to the product tested. Infinite Chemical Analysis, LLC makes no claims as to the efficacy, safety or other risks associated with any detected or non-detected levels of any compounds reported herein. This Certificate shall not be reproduced except in full, without the written approval of Infinite Chemical Analysis, LLC.



Certificate of Analysis

QA SAMPLE - INFORMATIONAL ONLY

2 of 3

ICAL ID: 20240411-048
Sample: CA240411-033-060
OXIS6K041024
Strain: OXIS6K041024
Category: Ingestible
Type: Tincture

Batch#: _____
Batch Size Collected: _____
Total Batch Size: _____
Collected: 04/15/2024; Received: 04/15/2024
Completed: 04/15/2024

Residual Solvent Analysis

| Category 1 | LOQ | LOD | Limit | Status | Category 2 | LOQ | LOD | Limit | Status | Category 2 | LOQ | LOD | Limit | Status |
|------------|-----|-----|-------|--------|------------|-----|-----|-------|--------|------------|-----|-----|-------|--------|
|------------|-----|-----|-------|--------|------------|-----|-----|-------|--------|------------|-----|-----|-------|--------|

NR= Not Reported (no analysis was performed), ND= Not Detected (the concentration is less then the Limit of Detection (LOD)). Analytical instrumentation used: HS-GC-MS; samples analyzed according to SOP RS-INST-003.

Heavy Metal Screening

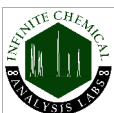
| | LOQ | LOD | Limit | Status |
|--|-----|-----|-------|--------|
|--|-----|-----|-------|--------|

NR= Not Reported (no analysis was performed), ND= Not Detected (the concentration is less then the Limit of Detection (LOD)). Analytical instrumentation used: ICP-MS; samples analyzed according to SOP HM-INST-003.

Microbiological Screening

| | Limit | Result | Status |
|--|-------|--------|--------|
|--|-------|--------|--------|

ND=Not Detected. Analytical instrumentation used:qPCR; samples analyzed according to SOP MICRO-INST-001.



Infinite Chemical Analysis Labs
8312 Miramar Mall
San Diego, CA
(858) 623-2740
www.infiniteCAL.com
Lic# C8-0000047-LIC

Josh M Swider

Josh Swider
Lab Director, Managing Partner
04/15/2024

Confident LIMS
All Rights Reserved
coa.support@confidentlims.com
(866) 506-5866
www.confidentlims.com



This product has been tested by Infinite Chemical Analysis, LLC using valid testing methodologies and a quality system as required by state law. All LQC samples were performed and met the prescribed acceptance criteria in 16 CCR section 15730, pursuant to 16 CCR section 15726(e)(13). Values reported relate only to the product tested. Infinite Chemical Analysis, LLC makes no claims as to the efficacy, safety or other risks associated with any detected or non-detected levels of any compounds reported herein. This Certificate shall not be reproduced except in full, without the written approval of Infinite Chemical Analysis, LLC.



Certificate of Analysis

QA SAMPLE - INFORMATIONAL ONLY

3 of 3

ICAL ID: 20240411-048
Sample: CA240411-033-060
OXIS6K041024
Strain: OXIS6K041024
Category: Ingestible
Type: Tincture

Batch#:
Batch Size Collected:
Total Batch Size:
Collected: 04/15/2024; Received: 04/15/2024
Completed: 04/15/2024

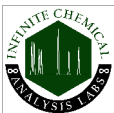
Chemical Residue Screening

| Category 1 | LOQ | LOD | Status | Mycotoxins | LOQ | LOD | Limit | Status |
|------------|-----|-----|--------|------------|-----|-----|-------|--------|
|------------|-----|-----|--------|------------|-----|-----|-------|--------|

| Category 2 | LOQ | LOD | Limit | Status | Category 2 | LOQ | LOD | Limit | Status |
|------------|-----|-----|-------|--------|------------|-----|-----|-------|--------|
|------------|-----|-----|-------|--------|------------|-----|-----|-------|--------|

Other Analyte(s):

NR= Not Reported (no analysis was performed), ND= Not Detected (the concentration is less than the Limit of Detection (LOD)). Analytical instrumentation used: LC-MS-MS & GC-MS-MS; samples analyzed according to SOPs PESTMYCO-LC-INST-004 and PEST-GC-INST-003.



Infinite Chemical Analysis Labs
8312 Miramar Mall
San Diego, CA
(858) 623-2740
www.infiniteCAL.com
Lic# C8-0000047-LIC

Josh M Swider

Josh Swider
Lab Director, Managing Partner
04/15/2024

Confident LIMS
All Rights Reserved
coa.support@confidentlims.com
(866) 506-5866
www.confidentlims.com



This product has been tested by Infinite Chemical Analysis, LLC using valid testing methodologies and a quality system as required by state law. All LQC samples were performed and met the prescribed acceptance criteria in 16 CCR section 15730, pursuant to 16 CCR section 15726(e)(13). Values reported relate only to the product tested. Infinite Chemical Analysis, LLC makes no claims as to the efficacy, safety or other risks associated with any detected or non-detected levels of any compounds reported herein. This Certificate shall not be reproduced except in full, without the written approval of Infinite Chemical Analysis, LLC.